

*** DeMaSy – New PCN 2020 ***

- 2 New standards will be delivered:
 - One standard will contain all accounts which will be updated with an end date for accounts flagged as DEL/MOV/MRG/SPLIT in the comparative schedule (see internet link at the end).
Name: [STANDARD - update PCN 2009 based on PCN 2020 \(end dates\)](#)
 - One **new standard** will only contain **ALL PCN 2020 accounts** for new accounting entities to be created
Name: [STANDARD PCN 2020 eCDF \(V1.0\) - eTVA \(V1.0\)](#)
- DeMaSy eCDF XML files for eCDF upload have been modified to comply with the new eCDF requirements
- PCN 2020 changes:
 - **Delete existing accounts**
DeMaSy will place **an end date** to these accounts (and sub-accounts)
DeMaSy User will have to create new accounts (copy from standard) and make a posting to transfer the balance to new account.
All accounts used in the options having an end date will **be removed from the options** (except the control accounts which will have to be updated (Number and name))
 - **Move accounts** (change number of existing accounts)
DeMaSy user should create new account (copy from new standard) and transfer account balance to new account
 - **Split existing accounts** (one account has to be split into several accounts) DeMaSy User will have to make postings to split account balances if applicable
 - **Merge existing accounts** (several accounts become one account)
DeMaSy User will have to make postings to merge account balances
 - **New accounts**
New accounts will be available for being copied from new standard whenever needed

Information:

All accounts having an end date on the balance report (Id 862) will require action.

If **control accounts** (used in the **options**) have end date they will have to be updated with the correct new account number (ex: 141 does not no longer exist and becomes 1412. Because 141 is a system account with an end date, user should edit that account, change the number and remove the end date)

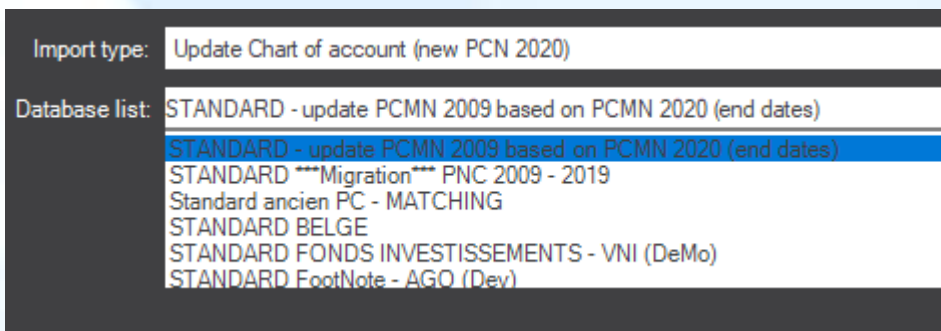
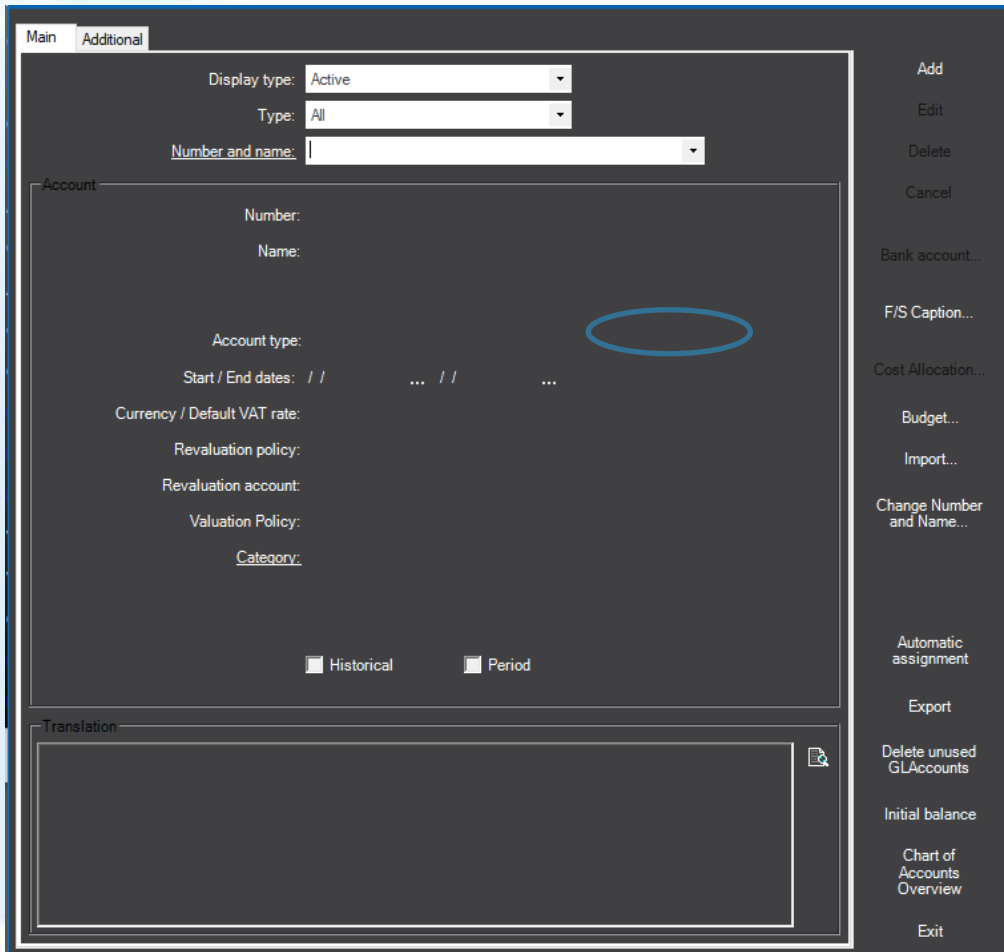
Accounts used in the options will be underlined in the balance report (Id 862) if selection criteria is selected.

Moreover, the report Options (id 704) allows to produce a list of all accounts used in the accounting options.



PROCEDURE TO FOLLOW:

- Request a DeMaSy V8 update
- Download new standards:
 - STANDARD - update PCN 2009 based on PCN 2020 (end dates)
 - STANDARD PCN 2020 eCDF (V1.0) - eTVA (V1.0)
- From each DeMaSy entity, from Chart of account, user should click on import and launch the procedure which updates the chart of accounts from the new STANDARD - update PCN 2009 based on PCN 2020 (end dates)



This procedure will

- delete all unused accounts and place end date to all accounts which are no longer existing
- Add a new Chart of account reference PCN 2020 in the account translation



CREATION OF NEX ACCOUNTS:

It is recommended that only useful (used) accounts be kept in the accounting records.

When a new account is to be created, the IMPORT procedure should be used. Simply select the new standard and the account(s) to be created.

NB: It is of course still possible to create the account manually (add) but the translations and assignments to the financial statements will then be manual as well.

Although not recommended, for reasons of performance and risk of account selection errors during the accounting inputs, it is possible to create all the PCN accounts in the file even if they are not all used.

By default, only the accounts whose No. does not yet exist will be created.

If the user wishes to create new accounts to replace the existing ones with an end date, the option will have to be deselected. In this case if an account with an end date exists, a new account with the same number will be created with a new start date.

Silicon DNA S.A. - Select Database (copy from)

Import type: Creation (Chart of account - Translation - Balance Sheet Assignment)

Database list:

- STANDARD PCN 2020 eCDF (V1.0) - eTVA (V1.0)
- Standard ancien PC - MATCHING
- STANDARD PCN 2009 eCDF (V2.6) - eTVA (V2.14)
- STANDARD PCN 2020 eCDF (V1.0) - eTVA (V1.0)
- STANDARD Update PCN 2009 based on PCN 2020 (End dates)

Account:

Create missing accounts (no duplication of account number)

OK Cancel



- IMPORT NEW TRIAL BALANCE FROM **STANDARD PCN 2020 eCDF (V1.0) - eTVA (V1.0)**
From the Financial statement screen select COPY FROM and import the new financial statement PCN (Trial balance) - eCDF (2020)

Silicon DNA S.A. - Select Database (copy from)

Import type: Import schema and translation

Database list: STANDARD PCN 2020 eCDF (V1.0) - eTVA (V1.0)
STANDARD - update PCN 2009 based on PCN 2020 (end dates)
Standard ancien PC - MATCHING
STANDARD OPCVM
STANDARD PCN 2009 eCDF (V2.6) - eTVA (V2.14)
STANDARD PCN 2020 eCDF (V1.0) - eTVA (V1.0)

Chart of Accounts: (used to make the link when importing)

F/S caption: **PCN (Trial balance) - eCDF (2020)**
eCDF-Art 34&36 (loi du 19.12.2010) ABREGE (2016)
eCDF-Art 34&36 (loi du 19.12.2010) COMPLET (2016)
PCN (Trial balance) - eCDF (2020)

Name: PCN (Trial balance) - eCDF (2020)

OK Cancel

To be noted that when the user wishes to use new PCN for postings, the new accounts numbers and names will have to be imported from the translations by the following procedure (language to be selected by user):

Button on Chart of account screen : CHANGE NUMBER AND NAME

Select the Type of chart of accounts

Modify number and name of the accounts
 Modify translation

Copy Type: Name

Chart of account type: PCMN 01.01.2020

Language: Français

OK Cancel



NEW FEATURES:

For all **split**, **merge** and **delete** there will be new functions (right-click) on Accounting / General ledger screen:

Account to account transfer: allows to transfer movement(s) from one account to another through an accounting entry automatically created based on the selected movements

Balance transfer: allows to transfer one account balance to a new account

The screenshot shows the 'General Ledger' interface for '(DeMo) ABACAB'. It features a top navigation bar, a filter panel on the left with fields for 'Display type', 'Account', 'Invoice payment type', 'Start-end date', 'Bank statement', 'Amount / Cur.', 'Description', and 'Confirmation Status'. A right-side panel includes 'Entry type', 'Sort', 'Rec Nbr', 'Filter type', and 'Documents'. A table below displays accounting entries with columns for 'Number', 'Name', 'Rec', 'Amount', 'Cur.', 'EUR', 'Date', 'Entry', 'Description', 'Type', and 'Conf.'. A context menu is open over the first entry (Number: 61348, Name: Autres honoraires, Amount: 1,000.00, Cur.: USD, EUR: 949.04, Date: 07/03/2018), listing options such as 'Information on selected Accounting entry', 'Select All', 'Unselect All', 'Assign to a different account...', 'Account to account transfer...', and 'Balance transfer...'.

Number	Name	Rec	Amount	Cur.	EUR	Date	Entry	Description	Type	Conf.
61348	Autres honoraires		1,000.00	USD	949.04	07/03/2018				



Internet links:

<https://ecdf.b2g.etat.lu/ecdf/formdocs/communications/20180628-eCDF-Migration%20vers%20nouveau%20PCN-FR.pdf>

https://ecdf-developer.b2g.etat.lu/ecdf/formdocs/communications/20190502-eCDF_modifications_formulaires_2020-FR.pdf

Tableau comparatif trilingue PCN 2009 vs. PCN 2020, tableau de passage et mappings vers les comptes annuels (en format Excel) - Septembre 2019 :

http://www.cnc.lu/fileadmin/user_upload/publications/pcn_ecdf/PCN_2009_PCN2020-20190909_Diffusion_v1.xlsx